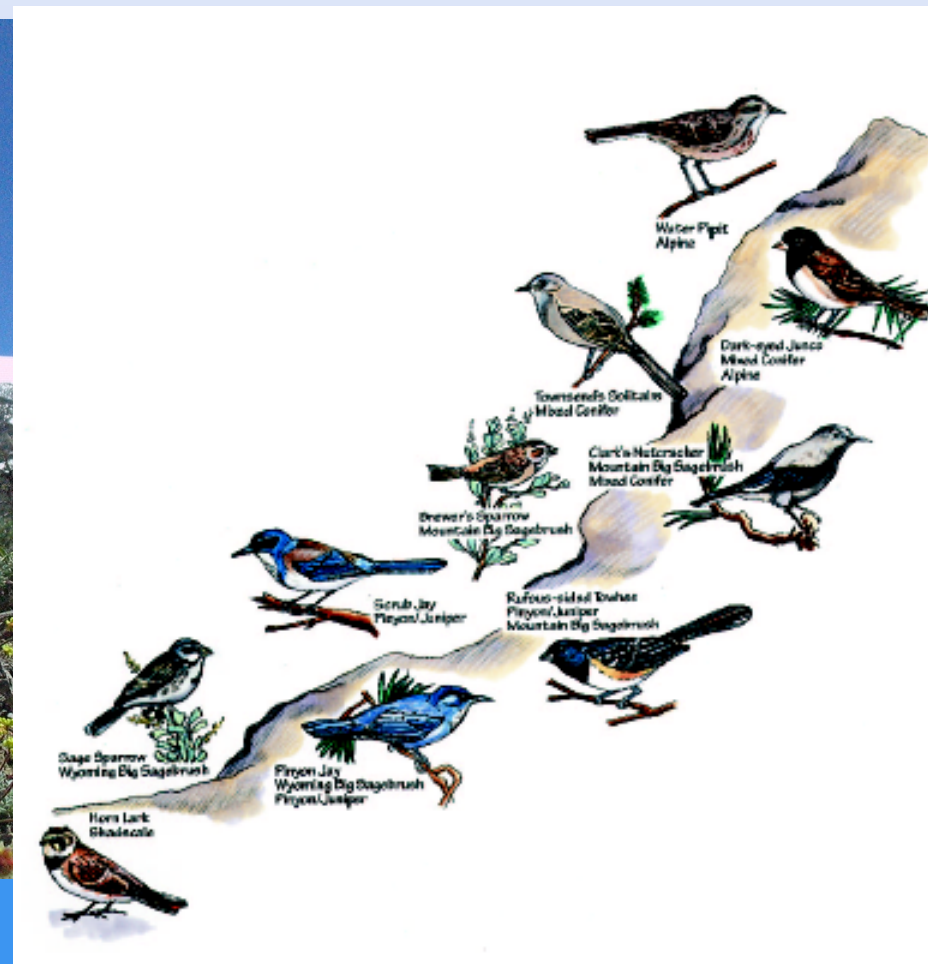




Birds at Great Basin National Park

By Gretchen Baker, Ecologist, Great Basin National Park





Where we are

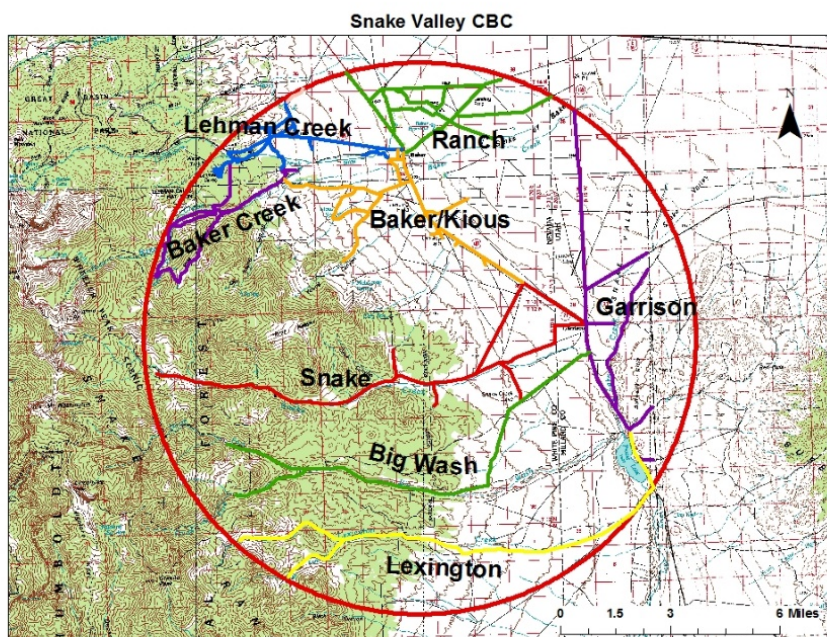
Figure 70. Exposed carbonate rocks in the Great Basin region. Modified after Veni (2002).





Christmas Bird Counts

- Snake Valley Circle, includes in and out of GRBA, started in 1997
- 2020 record of 20 participants and 62 species





Winter Raptor Surveys

- Help NDOW with Snake Valley and Spring Valley Routes





Bird BioBlitz in 2016

- Great Basin Bird Observatory
- Updated park bird list:

<https://www.nps.gov/grba/learn/nature/bird-list.htm>



Photo by Annette Hansen



Photo by John Dickson



Breeding Bird Surveys

- Initially trained by GBBO
- Several habitats within the Park



Photo by John Dickson



Strawberry Creek Fire in 2016

- Lightning caused
- Burned 4,500 acres
- Crossed 2 Breeding Bird Surveys
- Opportunity to do post-fire surveys

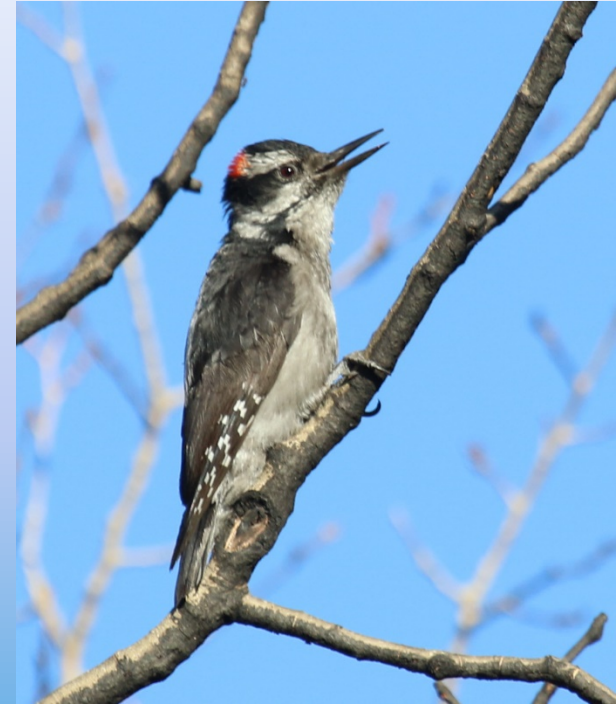
Habitat	# Pre-Fire Transects	# Post-Fire Transects
Riparian	6	4
Mountain Shrub	7	4





Results

- Riparian birds increase:
 - Broad-tailed hummingbirds (seeding?)
 - Cassin's finch (initial 2 years)
 - Chipping sparrow
 - Dark-eyed junco
 - Hairy woodpecker
 - Lazuli bunting (still increasing)
- Riparian birds decrease:
 - Spotted towhee
 - Warbling vireo





Results

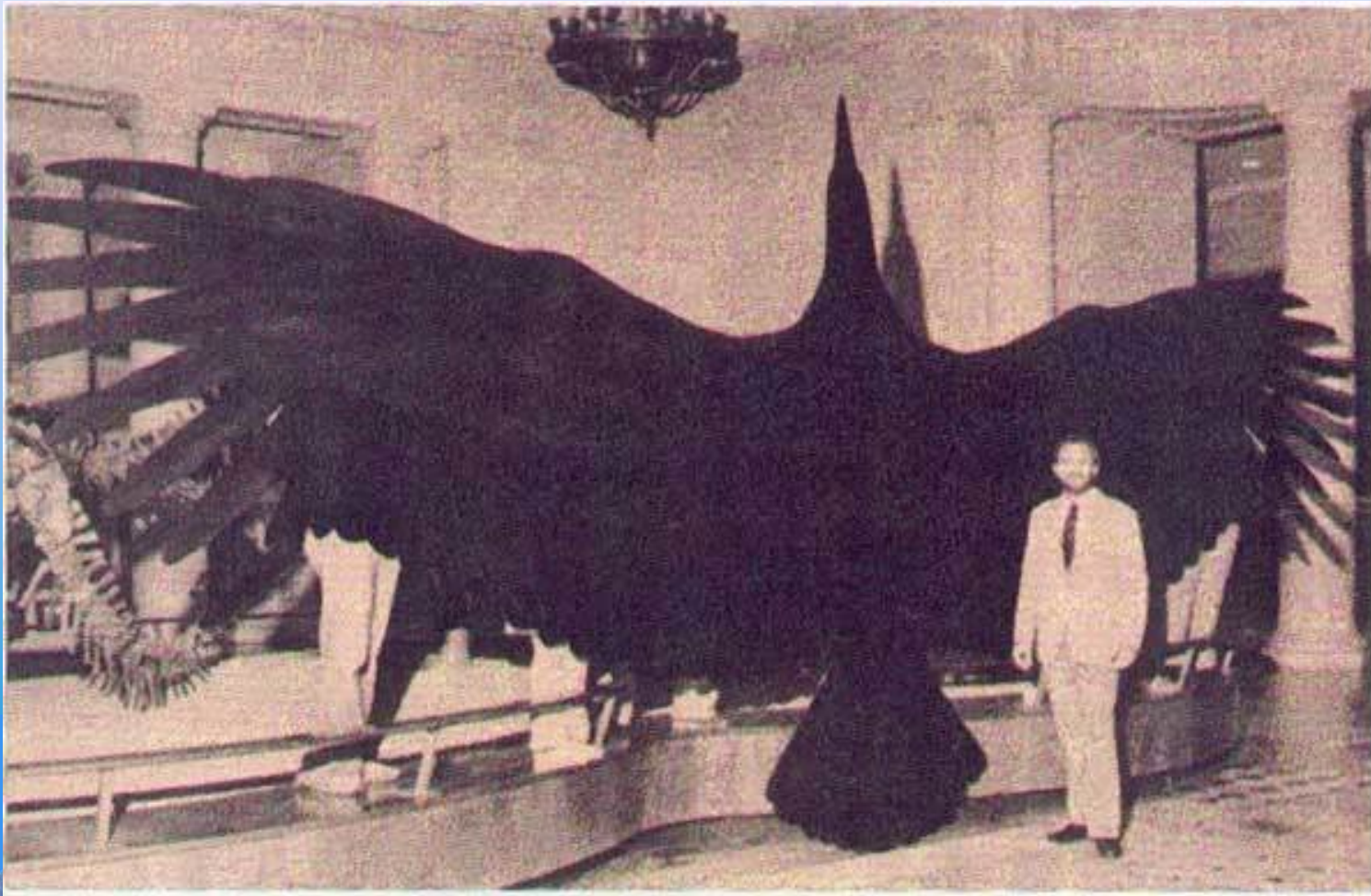
- Mountain shrub increase:
 - Northern flicker
 - Western wood-pewee (nearby woods)
 - Clark's nutcracker
- Mountain shrub decrease:
 - Brewer's sparrow
 - Sage sparrow
 - Spotted towhee



Photo by Lonnie Pilkington



- My contact info:
- [Gretchen Baker@nps.gov](mailto:Gretchen_Baker@nps.gov)



Incredible
Teratorn