

Gilded Flicker

Colaptes chrysoides

No photo yet.

Habitat Use Profile

Habitats Used in Nevada	
Joshua Tree (possibly Mojave Lowland Riparian)	
Key Habitat Parameters ●	
Plant Composition	Joshua tree, other tall <i>Yucca</i> spp., various cactus species
Plant Density	Natural tree, shrub, and cactus densities probably most suitable ^{EO}
Tree Size	Requires trees with ≤ 30-50 cm (12 – 20") DBH ⁴
Mosaic	Unknown
Distance to Water	No known relationship
Response to Vegetation Removal	Negative, but exotic weed control encouraged ^{EO}
Area Requirements ●	
Minimum Patch Size	Unknown
Recommended Patch Size	≥ 150 ha (370 ac) ^{EO}
Home Range	50 – 100 ha (110 – 220 ac) ⁴

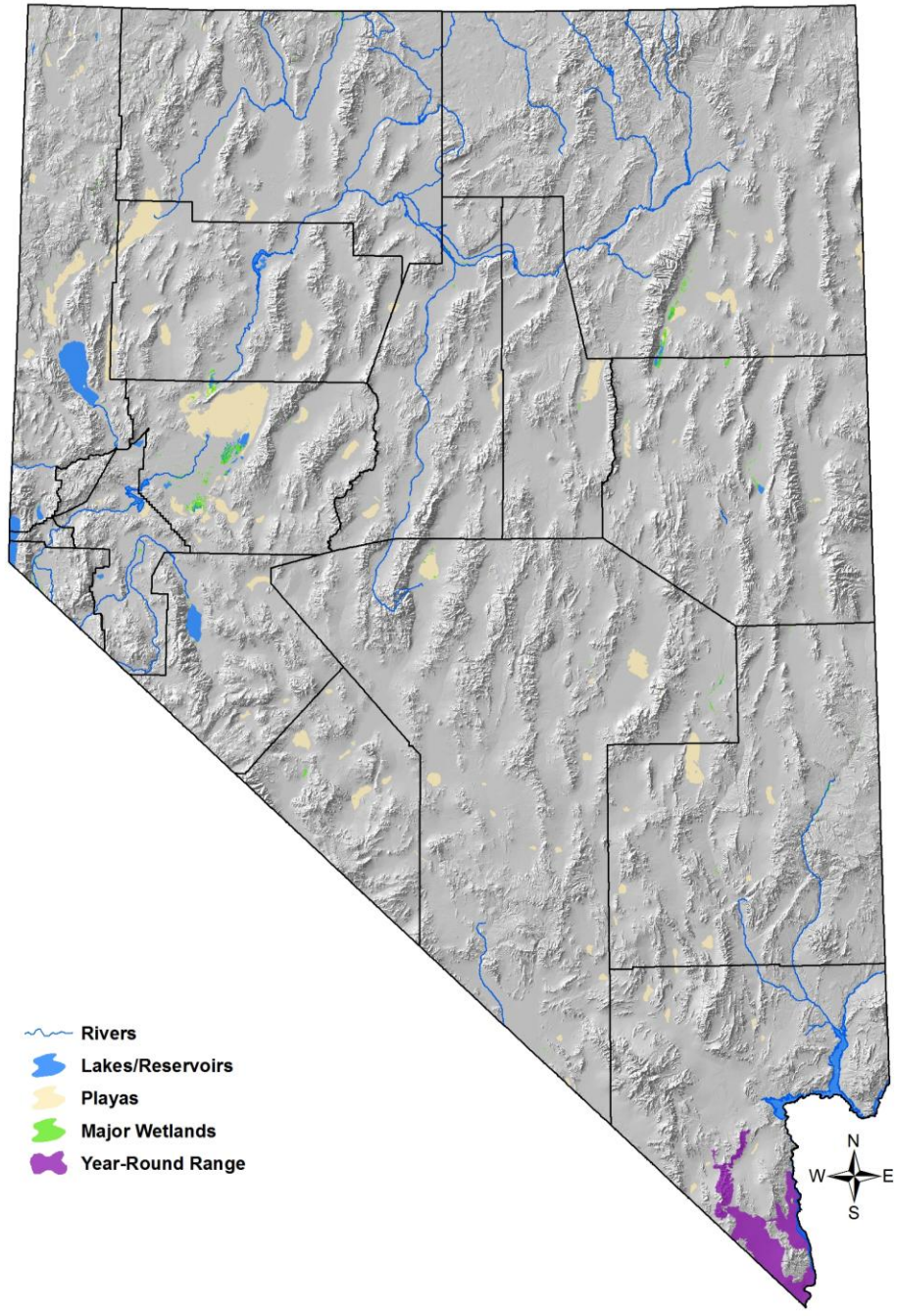
Conservation Profile

Priority Status	
Conservation Species	
Species Concerns	
Small population size Habitat threats	
Other Rankings	
Continental PIF	None
Audubon Watchlist	Red
NV Natural Heritage	S1
USFWS	Conservation Concern, Migratory Bird
BLM	None
USFS	None
NDOW	None
Trends	
Historical	Unknown
Recent ●	Appears stable overall, but may be declining in Mojave region ¹
Population Size Estimates	
Nevada ●	< 100 ²
Global ●	1,000,000 ³
Percent of Global ●	< 1%
Population Objective	
Maintain/Increase ^{EO}	
Monitoring Coverage	
Source	Nevada Bird Count
Coverage in NV ●	Fair/Poor
Key Conservation Areas	
Protection	Joshua tree habitat in Eldorado Valley, McCullough and Newberry ranges
Restoration	Joshua tree stands throughout Clark and Nye counties

Natural History Profile

Seasonal Presence in Nevada	
Probably year-round	
Known Breeding Dates in Nevada	
Early April – July ^{4,5}	
Nest and Nesting Habits	
Nest Placement	Excavates cavity in large tree, primarily <i>Yucca</i> spp. in Nevada ⁴
Site Fidelity	Unknown
Food Habits	
Basic	Omnivorous; ground forager
Primary Prey	Terrestrial insects ⁴
Secondary Prey	Fruits, seeds ⁴

Gilded Flicker
Colaptes chrysoides



Gilded Flicker
Colaptes chrysoides

References: ¹ Sauer et al. (2007), ² Floyd et al. (2007), ³ Rich et al. (2004), ⁴ Moore (1995), ⁵ GBBO unpubl. atlas data, ^{EO} expert opinion

Overview

Prior to the Nevada Breeding Bird Atlas project, Gilded Flickers were not known to breed within the state. During atlas surveys, however, a small but persistent breeding population was discovered in southern Nevada not far from Searchlight. It is unknown whether Gilded Flickers have had a long-term presence here, or whether these birds are the result of a recent colonization event (EO). Gilded Flickers in Nevada are clearly associated with Joshua Trees and other tall *Yuccas* that provide a substrate for nest cavities, but it is possible that they historically used Lowland Riparian habitat in the Lower Colorado River area of Nevada. Flickers along the Colorado River, where present in the 1980s, were also often found to be Gilded x Red-shafted hybrids (Moore 1995). Continued monitoring and additional research are needed to better understand the status and needs of this bird, but in the meantime, its limited habitat in Nevada should be protected from development or heavy disturbances.

Abundance and Occupancy by Habitat

- No data for Nevada; 20 birds / 40 ha in AZ (Moore 1995)

Nevada-Specific Studies and Analyses

- None

Main Threats and Challenges

- Urban / suburban development in occupied habitat
- Energy development in or near occupied habitat
- Habitat-destroying fire
- Off-road vehicles
- Invasive weeds that increase fire frequency
- Fragmentation of existing habitat through any of the preceding mechanisms

Species with Similar Conservation Strategies

- Bendire's Thrasher
- Le Conte's Thrasher

Gilded Flicker
Colaptes chrysoides

Conservation Strategies

Habitat Strategies

1. Joshua Tree conservation strategy benefits this species (see habitat accounts)
2. Protect critical occupied habitat from development and heavy OHV use
3. Aggressively attack fires that threaten this habitat

Research, Planning, and Monitoring

1. Search for additional Nevada breeding locations in areas with suitable habitat, including Wee Thump Joshua Tree Wilderness Area
2. Conduct research to determine habitat needs, patch size, seasonal movements
3. Monitor status of existing populations